

Neenah R-4990-DA Airport

Series

R-4990-DA

Cut Sheet

14" Wide Airport Bolted

14" Wide NEENAH Airport Bolted Extra Heavy Duty Trench Drain Grates and Frames

Product ID: R-4990-DA



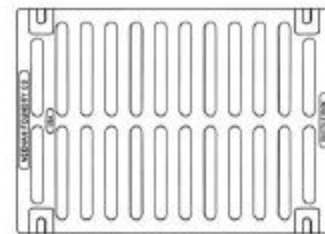
14" Wide Airport Neenah R-4990-DA Series Trench Grate

Bolted assembly

Catalog No.	A	B	C	Grate Matl.
R-4990-AA	8	2	6	Gray Iron
R-4990-BA	10	2	8	Gray Iron
R-4990-CA	12	2	10	Ductile Iron
R-4990-DA **	14	2	12	Ductile Iron
R-4990-EA *	17	2	15	Ductile Iron
R-4990-FA *	20	2	18	Ductile Iron
R-4990-HA *	26	2	24	Ductile Iron
R-4990-KA2 *	34	2	31	Ductile Iron
R-4990-OA *	51	2	48	Ductile Iron

* Type D solid cover available.

** Type C grate available.



TYPE "A"
GRATE OPENINGS

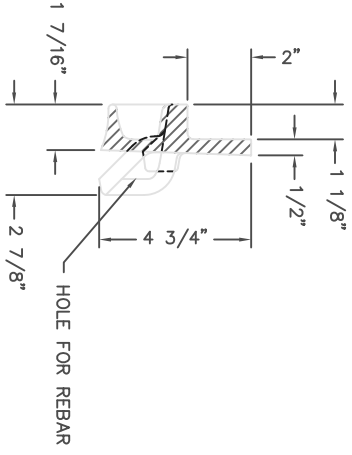
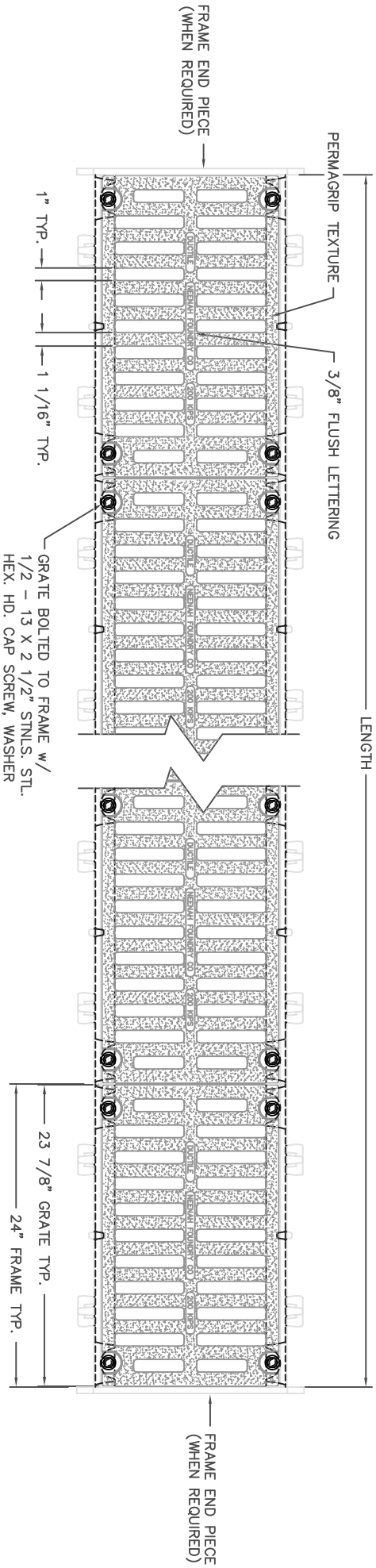
These trench drains are capable of supporting the heavy wheel loads of today's commercial environments. Grates are bolted to gray iron frames.

Suitable for aircraft loading per FAA Advisory Circular AC150/5320-6D.

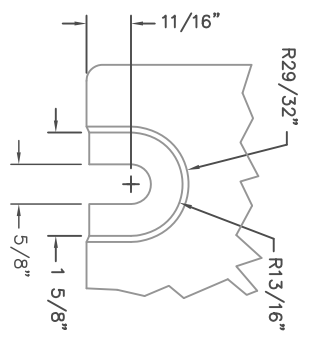
Gray iron furnished per ASTM-A48 Class 35B.

Ductile Iron furnished per ASTM A536 Grade 80-55-06.

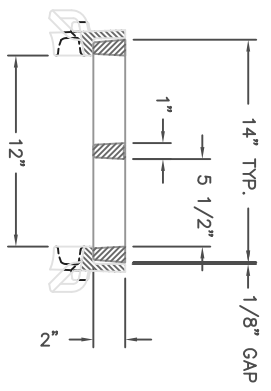




FRAME SECTION VIEW
 SCALE 1:4



TYPICAL BOLT SLOT DETAIL
 SCALE 1:2



R-4990-DA BOLTED
 TYPE "A" GRATE AND TYPE "B" FRAME
 TYPICAL SECTION

COMP. NOS.: SIDE FRAME 4999-2400; END FRAME 4990-3114; GRATE 4999-2014
 MATERIAL: SIDE FRAMES - CAST GRAY IRON ASTM A-48, CLASS 35A,
 END FRAMES - CAST GRAY IRON ASTM A-48, CLASS 35B,
 GRATES - CAST DUCTILE IRON ASTM A-536, 55 + KSI YIELD
 FINISH: NO PAINT

CAD DWG. REF: 4990DA ABDWG-1

DR.	E. NIVER	SCALE	TITLE:
CH.		1/8"=1"	R-4990-DA DOUBLE BOLT STYLE
APP.		DM CHK.	TYPE "A" GRATE w/ TYPE "B" FRAME
DATE	08-16-2011		

DATE	DESCRIPTION	BY	INT
08-05-2013	CHANGED THE FRAME METAL SPEC PER RIVAL HENING	EAJ	
	REVISION		

NEENAH FOUNDRY COMPANY NEENAH WISCONSIN 54956	INTE	INF-	B
---	-------------	------	---

R-4990 Airport, Port & Heavy Industrial Series

BOLTED TRENCH FOR EXTRA HEAVY DUTY APPLICATIONS

These trench drains are capable of supporting the heavy wheel loads of today's commercial environments. For larger trench widths or greater loading requirements, please contact our Product Engineering Department.

Grates are bolted to gray iron frames.

For suggested forming procedures, see page 285.

Suitable for aircraft loading per FAA Advisory Circular AC150/5320-6D.

Catalog No.	A	B	C	Grate Matl.
R-4990-AA	8	2	6	Gray Iron
R-4990-BA	10	2	8	Gray Iron
R-4990-CA	12	2	10	Ductile Iron
R-4990-DA * **	14	2	12	Ductile Iron
R-4990-EA *	17	2	15	Ductile Iron
R-4990-FA *	20	2	18	Ductile Iron
R-4990-HA *	26	2	24	Ductile Iron
R-4990-KA2 *	34	2	31	Ductile Iron
R-4990-OA *	51	2	48	Ductile Iron

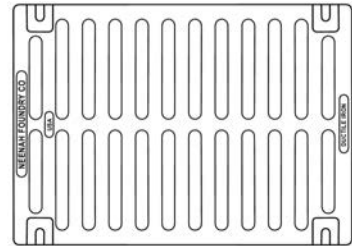
* Type D solid cover available.

** Type C grate available.

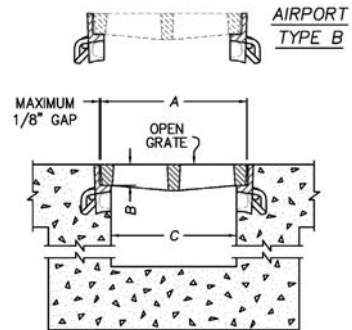
Gray iron furnished per ASTM-A48 Class 35B.

Ductile Iron furnished per ASTM A536 Grade 80-55-06.

These grates are also available with superior duty R-4993 & R-4994 frames as shown on page 287.



TYPE 'A'
GRATE OPENINGS



Supplied By:

**TRENCHDRAIN
SUPPLY**

877-903-7246

www.trenchdrainsupply.com